

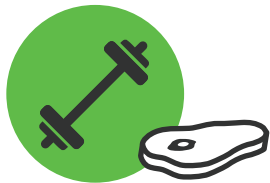
PROTEIN BENEFITS

Beef gives your body more of the high-quality protein you need to achieve and maintain a healthy weight and preserve and build muscle.

WHY FOCUS ON PROTEIN?

Heart healthy diets with high quality lean protein helps lower cholesterol (the bad kind!), **reduce the risk of chronic disease and reduce high blood pressure.**

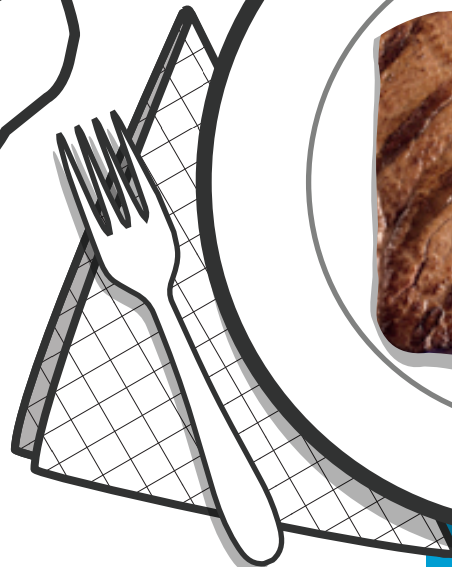
Protein **helps support strong, lean bodies.**



Get more from your workout! Studies show exercise is more effective when paired with a higher-protein diet, and beef provides the amino acids necessary for **building and replenishing muscles.**



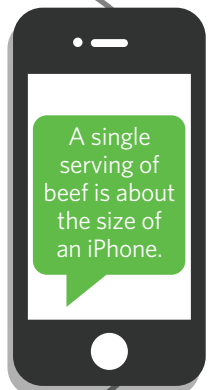
Feeling hungry? People who eat a higher-protein diet (about 30% of daily calories from protein) feel **more satisfied, which may help prevent overeating.**



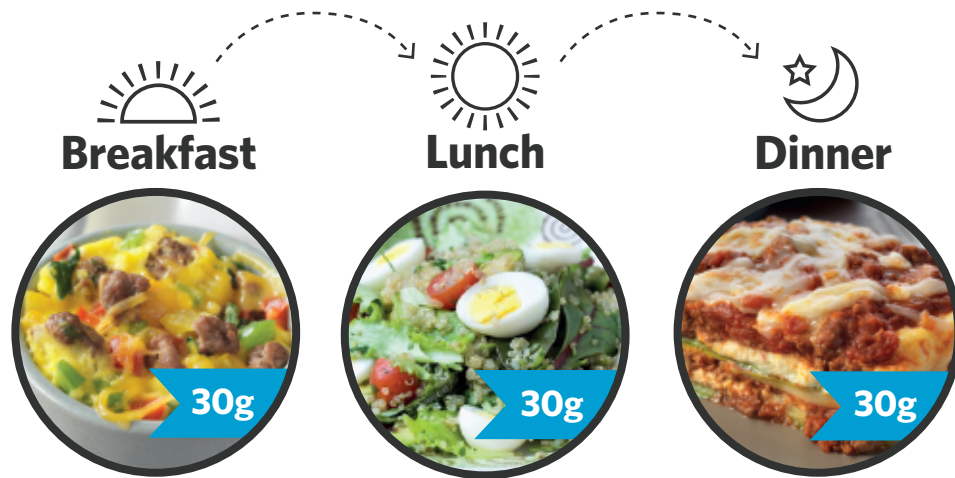
50%

of your recommended Daily Value of protein

a 3-oz serving of **beef** provides 25 grams of protein and 10 essential nutrients in one tasty package.



THE BENEFITS OF BALANCED PROTEIN THROUGHOUT THE DAY



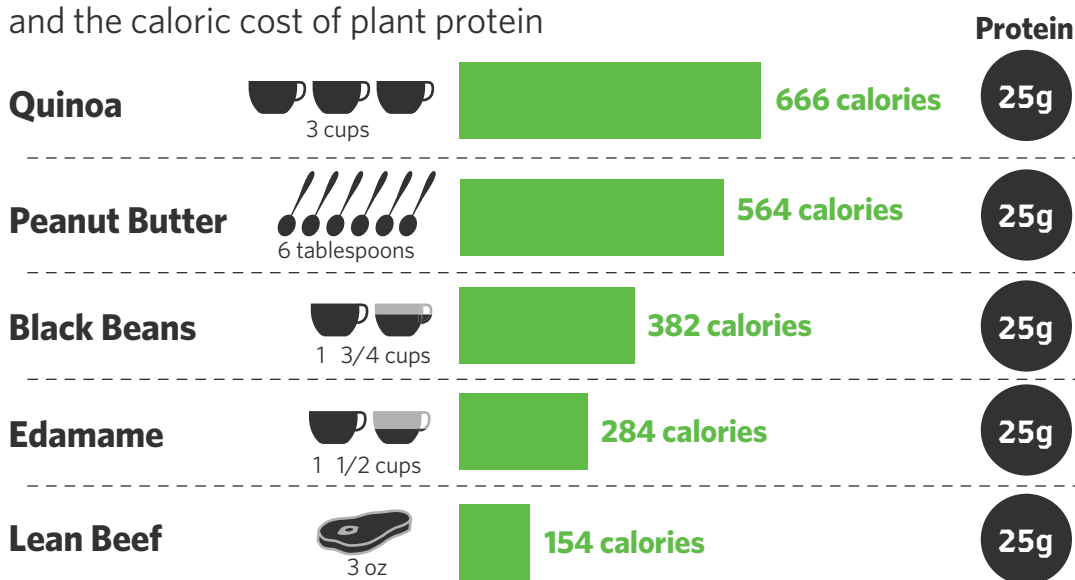
New research shows spreading protein intake evenly throughout the day may be the most beneficial for overall health and wellness.

25-30 grams

aim for this amount of protein at each meal, plus snacks for ultimate body benefits.

WHAT DOES 25 GRAMS OF PROTEIN LOOK LIKE?

Take a look at what 25 grams of protein looks like and the caloric cost of plant protein



Animal proteins, such as lean beef, provide complete high-quality protein that contains all the essential amino acids the body needs for optimal health.

USDA/HHS. Dietary Guidelines for Americans, 2010. 7th Edition, Washington, DC: U.S. Government Printing Office, December 2010.

USDA, Agricultural Research Service. Energy intakes: percentages of energy from protein, carbohydrate, fat, and alcohol, by gender and age, what we eat in America, NHANES 2009-2010. Available at: www.ars.usda.gov/ba/bhnrc/fsrg.

Mamerow M, et al. Dietary protein distribution positively influences 24-h muscle protein synthesis in healthy adults. *J Nutr.* 2014;144:876-80.

Paddon-Jones D, et al. Protein, weight management, and satiety. *Am J Clin Nutr.* 2008;87:1558S-61S.

Leidy H, et al. Beneficial effects of a higher-protein breakfast on the appetite, hormonal, and neural signals controlling energy intake regulation in overweight/obese "breakfast-skipping" late-adolescent girls. *Am J Clin Nutr.* 2013;97:677-88.

Leidy H, et al. Increased dietary protein consumed at breakfast leads to an initial and sustained feeling of fullness during energy restriction compared to other meal times. *Br J Nutr.* 2009;101:798-803.

Johnston C, et al. High-protein, low-fat diets are effective for weight loss and favorably alter biomarkers in healthy adults. *J Nutr.* 2004;134: 586-91.

Layman D, et al. Dietary protein and exercise have additive effects on body composition during weight loss in adult women. *J Nutr.* 2005;135:1903-10.

Layman D, Walker D. Potential importance of leucine in treatment of obesity and the metabolic syndrome. *J Nutr.* 2006;136:2319S-2335.

Noakes M, et al. Effect of an energy-restricted, high-protein, low-fat diet relative to a conventional high-carbohydrate, low-fat diet on weight loss, body composition, nutritional status, and markers of cardiovascular health in obese women. *Am J Clin Nutr.* 2005;81:1298-306.

Merchant A, et al. Protein intake is inversely associated with abdominal obesity in a multi-ethnic population. *J Nutr.* 2005;135:1196-201.

Symons T, et al. A moderate serving of high-quality protein maximally stimulates skeletal muscle protein synthesis in young and elderly subjects. *J Am Diet Assoc.* 2009;109:1582-6.

Rodriguez N, et al. Dietary protein, endurance exercise, and human skeletal-muscle protein turnover. *Curr Opin Clin Nutr Metab Care.* 2007;10:40-45.

Layman D, et al. Protein in optimal health: heart disease and type 2 diabetes. *Am J Clin Nutr.* 2008;87:1571S-5S.

Paddon-Jones D, Leidy H. Dietary protein and muscle in older persons. *Curr Opin Clin Nutr Metab Care.* 2014;17:5-11.

Westerterp-Plantenga MS, et al. Dietary protein, metabolism, and body-weight regulation: dose-response effects. *Int J Obes* 2006;30:S16-S23.

Roussel M, et al. Beef in an Optimal Lean Diet study: effects on lipids, lipoproteins, and apolipoproteins. *Am J Clin Nutr.* 2012;95:9-16.

Wycherley T, et al. Effects of energy-restricted high-protein, low-fat compared with standard-protein, low-fat diets: a meta-analysis of randomized controlled trials. *Am J Clin Nutr.* 2012;96:1281-98.

ABOVE ALL ELSE .



IT'S WHAT'S FOR DINNER.

BeefItsWhatsForDinner.com

Funded by the Beef Checkoff.